



ELITE CONCRETE  
DRILLING AND SAWING

# CAPABILITY STATEMENT

---

JANUARY 2021



Beyond Expectations

K970  
RING

# COMPANY INFORMATION

## Elite Concrete Drilling & Sawing Pty Ltd

**ABN:** 75 156 121 916

### Telephone

Brendon Kennedy | Managing Director | 0408 600 574

Matt Jorgensen | Supervisor | 0400 744 072

[www.eliteconcretedrillingandsawing.com.au](http://www.eliteconcretedrillingandsawing.com.au)

[eliteconcdrilling@bigpond.com](mailto:eliteconcdrilling@bigpond.com)

### Head Office

101 Mia Mia Road,  
Broadford,  
Victoria 3658

### Capability

Core Drilling  
Hand Sawing  
Ring Sawing  
Wall Sawing  
Wire Sawing  
Inverted Drilling  
Steel Cutting  
Soft Cutting  
Asphalt and Concrete Sawing  
Underwater Cutting / Drilling  
Large Diameter Drilling  
Expansion Cuts  
Concrete Grinding  
Concrete Polishing  
Concrete Sealing

# Overview

**Our organisation has an unprecedented reputation throughout Victoria for delivering high quality, time sensitive concrete drilling, sawing and polishing services that surpass client expectations.**

**The ELITE brand is synonymous with quality management, safety focused and outstanding customer service for over 10 years.**

**Quality encompasses a whole range of benefits for our clients. Value for money, seamless integration into your project and timely execution all need to be satisfied to determine a projects ultimate status.**

**ELITE can proudly boast that we consistently meet these quality determinants on every project.**

**From minor repairs or maintenance to large commercial and infrastructure projects, ELITE have the capacity, expertise and capability to deliver .... beyond expectations.**

**We have learned over many years that integral to the success of any project is the team work and collaboration between stakeholders involved.**

**In particular, our management and leadership focus is on consistent and open communication across all facets of our works and your project. This ensures timely and accurate transparency of information to embed and fully optimise client requirements.**

**Working collaboratively with client's personnel and key stakeholders on work methodology and processes, demolition techniques or maintenance and repair is second nature to ELITE.**

**We have completed dozens of projects for Tier 1 and Tier 2 organisations with successful outcomes on each engagement.**

**We look forward to working with you and welcoming you to our ever increasing list of satisfied customers.**

A handwritten signature in black ink, reading "Brendon Kennedy".

**Managing Director**

***"It's teamwork and a trusting relationship that deliver mutually beneficial outcomes"***



# People

Our team of highly experienced and professional staff have the capabilities to lead, manage and control projects of varying requirements.

Having decades of experience in the industry helps in recognising optimal methodologies that can be applied to project design and constructability.



***"ELITE's commitment to developing and fostering the skills of its personnel, keeping up to date with new technology and methods, ensures that the company attracts high quality people."***

It goes without saying that the suitable selection of a professional Construction company with capacity and the experience to deliver, is vital in ensuring a positive and timely outcome.

The team we utilise for our projects provide a wealth of practical construction experience. ELITE has worked on numerous and diverse projects and are acutely aware of project limitations and hurdles.

Along with our experienced management team, ELITE is underpinned by our qualified, competent and skilled tradespeople. Our experienced personnel are always available to participate, lead and manage all facets of our works. Our steady growth is testament to the quality of our operation and the trust we have been given by our clients.

# Capability

ELITE is proud of its reputation within the construction industry, a reputation that attracts a growing number of clients and constant repeat business with major organisations.



**No two projects are ever the same.**

**Build methodology, environmental factors, the location and safety requirements, all have a bearing on the workflow and processes needed to ensure timely delivery.**

**Facing different project challenges requires superior planning and thinking, and this is where ELITE is way ahead of the field.**

**With the principals having over 25 years' experience in the construction industry, there is very little that they have not been exposed to and not been able to overcome.**

**Having a deep understanding of build processes, project planning and trade integration, provides ELITE with the opportunity to maximise its expertise and add value to client outcomes.**

# Working Collaboratively

**ELITE believe that the achievement and maintenance of a strong relationship is built through trust and openness which results in superior project outcomes.**

**ELITE has developed and significantly matured over many years through the stability and skill of its management team, the continuous development of its internal management systems and its customer centric approach within all commercial interactions.**

**We believe that working together to solve issues creates a more innovative environment and it is through these core values that we successfully complete our projects.**

"We work as a team... with your team"



## Insurances

**ELITE ensures that all policies will remain current during the project and will meet contract and appropriate risk mitigation requirements.**

**Annual reviews with Brokers ensure the most recent and relevant cover is maintained.**

**Policy Certificates of Currency are available upon request.**





The background of the slide is a composite of three grayscale images. The top-left image shows a worker in a trench, wearing a hard hat and safety gear, working with a hose. The top-right image shows a long, straight tram track with a concrete barrier on the right side. The bottom image shows a street with tram tracks, with a worker operating a machine on the tracks. A teal triangle is in the top right corner.

## Recent Contracts

- **Metro Tunnel Project**
- **EJ Whitten Bridge**
- **M80 Upgrades**
- **West Gate Tunnel Project**
- **Western Roads Upgrades**
- **MTM Track Renewals**
- **Level Crossing Removals Victoria**
- **Major Tram Depot Upgrades**
- **Hospital Upgrades**

- **Web Dock Terminal Upgrades / Modifications**

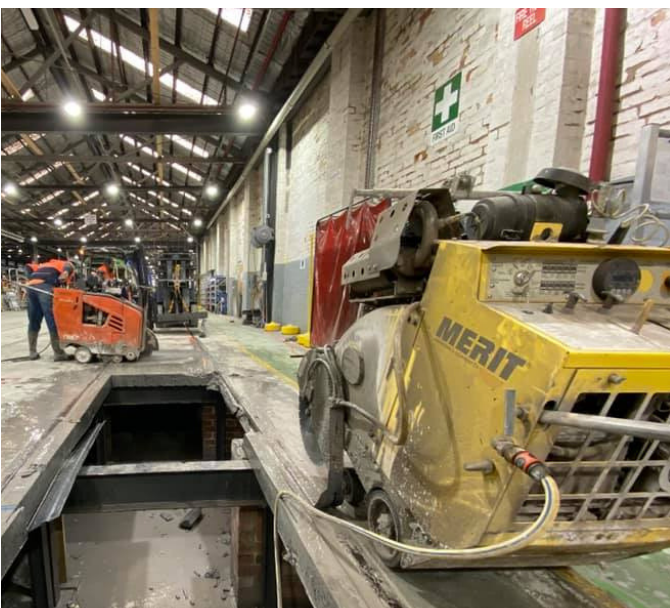
***" With over 80% of our work being repeat customers, we are justifiably proud of our track record"***

## Plant & Equipment

ELITE'S assets are modern, professionally equipped and maintained to the highest industry standards.

### SAWS and DRILLS

- 3 x Pentruder Wire - Wall Saws**
- 3 x Husqvarna Road Saws 4800**
- 3 x Husqvarna Road Saws 4400**
- 3 x Merritt Road Saws 4400**
- 10 x Husqvarna Demo Saws K970**
- 5 x Husqvarna Ring Saws K970**
- 5 x Stihl Demo Saw TS800**
- 5 x Husqvarna Soft Cutters 150**
- 2 x MK Diamond Soft Cutter**
- Shindaiwa 50 KVA Generator**
- Scanmaskin WS Remote Control Grinder**
- 3 x Extruder Fans**
- Multiple sized core drills and spare parts kept in stock for redundancy**



### SERVICE VEHICLES

- 2 x HiAce Vans 2020**
- 2 x HiAce Vans 2019**
- 2 x HiAce Vans 2018**
- 1 x HiAce Van 2017**
- 1 x HiAce Van 2016**
- 1 x Hilux Utility 2018**
- 1 x Hilux Small Utility 2019**
- 1 x Ford Transit Van 2017**
- 2 x Large Box Trailers**
- 1 x Large Tray Trailer**
- All Vehicle Trailers are equipped with Water Tank and Generators**
- 4 x fully equipped Trailers on standby**

**Our FULL TIME  
Service Mechanic  
supports Site and  
Workshop  
requirements**



# Compliance

ELITE has developed and utilises effective management systems to ensure safe and high quality outcomes for our clients.

## Safety

Without diminishing management's obligations, the responsibility and accountability for health and safety rests with every individual in the organisation.

However, ELITE believe that it is management's responsibility to ensure all employees are aware of their requirements, industry and company expectations, and for management to provide the necessary tools and resources to empower every employee to be a safety officer.

The company operates in full compliance to all statutory and legal requirements with a 'No Injuries to Anyone' daily mission. This includes site personnel, contractors, consultants, visitors, the public and surrounding site users.

### **SAFETY MISSION:** **No Incident or Injury**

ELITE's Safety Management System is compliant with the requirements of AS4801 / ISO45001- Safety Management Systems.

Our organisation manages Workplace Safety through our Environmental Health and Safety Management Plan (EHSMP).

"If it's unsafe, all employees have managements authority to

**STOP THE TASK"**

*"Our safety record reflects the success of our Safety Management System"*

# Quality

**Our service delivery is driven by our passion to get it right the first time.**

## **QUALITY MISSION: Do It Right, Do It Once**

**Quality is outworked in alignment with our Quality Policy and Procedures.**

**By implementing a consistent, systematic and proven approach, ELITE are able to provide guaranteed outcomes and address all project issues in a reliable and measurable manner.**

**The focus of our Quality process is to ensure a consistent and predictable service delivery to the highest industry standards. From selecting the right equipment to ensuring correct techniques, ELITE's quality processes ensure consistent client satisfaction.**





# ELITE CONCRETE DRILLING & SAWING

No Job too big, or too small

